

Banbury  
Museum  
& Gallery

# Impact Report

2025



# Banbury Museum & Gallery at a glance

## A statement of purpose

We will enhance the quality of life and wellbeing of our community and users, through a cultural offer that will unlock our stories of past, present and future. We will be accessible, acknowledging the diverse needs of our users, and non-users. We will work with museum partners across the world, for the benefit of our town and region.

Banbury Museum Trust is Charitable Incorporated Organisation, no 1153109.

### 4 major exhibitions

3D: Surprise your Eyes  
The Changing Face of Banbury  
Travel Photographer of the Year  
Dinosaurium: Reimagined Creatures

Offered **165**  
family events and  
welcomed over  
**2100** children

An outstanding  
programme of local history  
lectures, both onsite and  
streamed with partners the  
Banbury Historical Society

Engaged with  
**1500** young  
people at school



Showcased **40** local  
contemporary artists,  
whose work is for sale  
in the Museum Shop

Led the Banbury Quays  
Consortium, working to  
regenerate Banbury's  
economy

Reached out to  
seniors in our  
community

Hosted  
**92 255** visits

# Banbury Museum & Gallery celebrates a rich heritage,

bringing stories of wonder from near and far, home to Banbury for our community



*Philip IV of Spain, a half-ducaton, 1633. From a coin hoard found near Broughton Castle, and on display.*

On loan from © Ashmolean Museum, University of Oxford.



*The story of the coin hoard, and Queen Henrietta Maria's journey through North Oxfordshire in July 1643, told by Keith Westcott at Broughton Castle, an event offered together with our partners the Rotary Club of Banbury Cherwell.*

# The Changing Face of Banbury

an exhibition enriched by living memory, curated  
in partnership with our community

*'This museum is a treasure.  
So many memories visited  
today. Thank you.'*



*'It's great to see  
you are keeping the  
past alive.'*

*'Your exhibitions are always fun,  
interesting, illuminating and  
creative. This is all that and more.  
Only a resident for 30 years (!)  
It's fascinating to see how things  
have changed in the short time I've  
been here. Bravo! More please.'*



*'Excellent exhibition. A lot of hard  
work has created a wonderful  
show. – Rod & Mary Price (and  
Alex, an assistance dog).'*

**Top:** Aluminium worker's protective helmet with visor,  
Oxfordshire Museum Service.

**Left:** The Changing Face of Banbury Exhibition.

**Right:** Bird's promotional biscuit tin, Oxfordshire  
Museum Service.

**Bottom:** Sharara Kurta Suit & boy's formal costume,  
including mojas shoes and hat Oxfordshire Museum  
Service.



*'I love this museum.  
It's really fun and  
exciting [sic]  
– Rosie'*



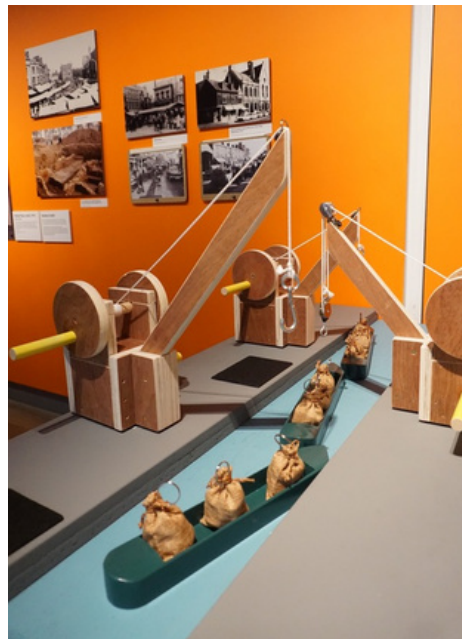
*'This is part of why I like volunteering at the museum.'*

- Kevin, Museum Volunteer expressing his enjoyment about the conversations he has had with visitors about their memories of Banbury.

*"Marvellous exhibition. Every town should celebrate its recent past in this way."*



*"Lovely to visit this exhibition again and immerse myself in Banbury's past! Very knowledgeable volunteers as well."*



**Top:** In-house designed exhibition interactive demonstrating Banbury's canal history.

**Left:** Direction markers on the stone signpost at Wroxton  
© Tony Grice, Banbury Camera Club 'Images of Banbury' project .

**Right:** Members of the Museum's 'Times Gone By' Reminiscence Group using new audio equipment purchased as part of the 'Voices of the Ally' grant from The National Lottery Heritage Fund.

**Bottom:** The zero emission vehicle S010 from local company Prodrive.

*"Your exhibitions are always fun, interesting, illuminating and creative. This is all that and more."*



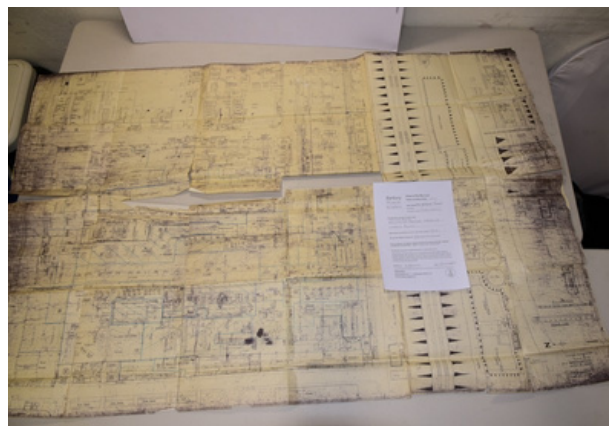
# The Alcan Roadshow

Banbury Museum & Gallery awarded a grant of nearly £10,000 from the National Lottery Heritage Fund for 'Voices of the Ally'

A project capturing and sharing the memories of those who worked at Banbury's nationally significant Alcan aluminium works.

700 objects, photo and documents identified within the community.

8 hours of oral history interviews created, to be edited into a short film.



**Above:** Plan of the works with details of all the machinery, 1940s.

**Left:** Photo of the home guard at the factory, which they protected during the Second World War. Home Guard Certificate of Proficiency, 1944.



# Banbury Museum & Gallery are storytellers

Partners the Banbury Historical Society, offer an outstanding programme of lectures and excursions as well as care for and open the Rosemarie Higham Library, a rich resource for anyone interested in the town and regions local history.

A story of war, the part Banbury played in the First World War. Munition factory site tours led by Exhibitions Manager Dale Johnston.

*"We really enjoyed the tour – informative and interesting, bringing out the significance and scale of the site. You were a terrific guide – knowledgeable and engaging, linking events and activities at the factory with the bigger history of WW1".*



This year, visitors joined us for a relaxed after hours viewing of our exhibition '*Dinosaurium: Reimagined Creatures*'. Director of the Sedgewick Museum of Earth Sciences, University of Cambridge, Liz Hide delivered a engaging talk on Mary Anning and her fossil discoveries at Lyme Regis.

# Working with schools both in the Museum and in the classroom

Banbury Museum & Gallery successfully bid for funding and training from the Science Museum in London, as part of the 'Science in Your World' group of museums.

Science, Technology, Engineering and Maths (STEM) are everywhere, but many people feel STEM is not for them.

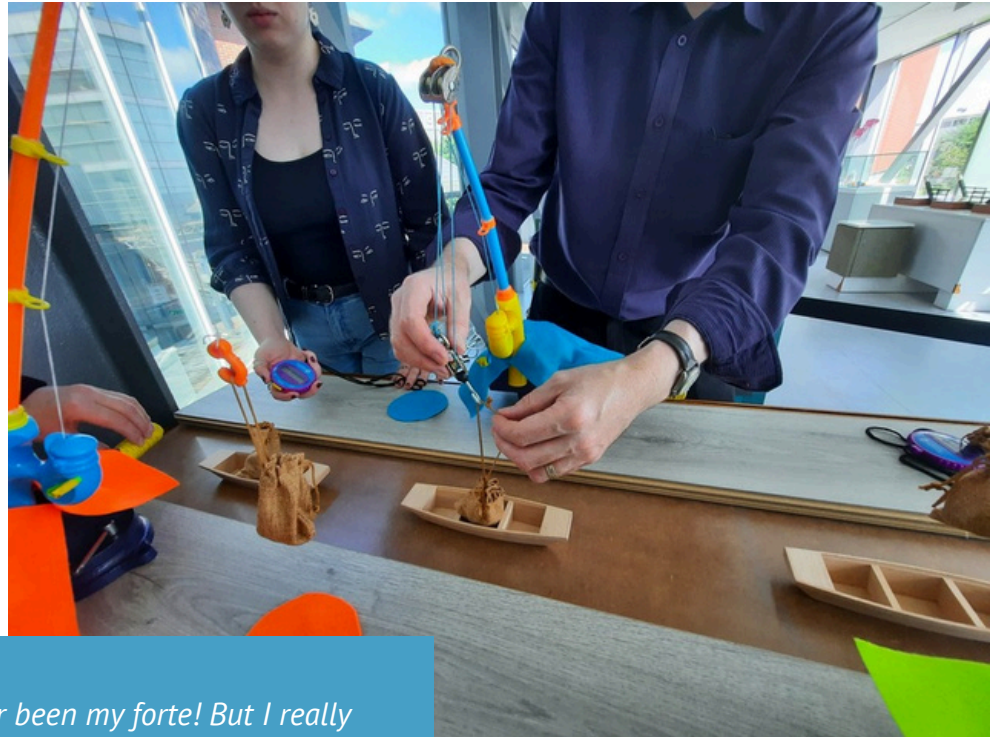
We have been working with school children and families to trial fun, accessible, practical activities, linked to STEM.

We created prototype exhibits, testing them with our visitors, and trialled **6 new science workshops** for primary schools, involving **420 local schools**.



*"Early Years had such a great time exploring the factors that make objects float or sink, we discovered size and materials can impact an object's density." -Teacher feedback.*





*'Science has never been my forte! But I really enjoyed it. It was scientific without being off-putting to a non-science person.'*

Primary School Teacher on one of our new STEM focused workshops.



# Family fun at the Museum

Through 2025 we will have run over **165** children's activities and welcomed over **2100** children to the museum through our family events programme.



## Dino Day

This year our footfall topped 800 people in a single day in August for a free dinosaur themed activity to celebrate our exhibition *Dinosaurium: Reimagined Creatures*. With crafts, a fossil dig, trails and story telling, everyone got into the spirit of the day, including staff!





# Our Senior Community



**Above left:** A guided reminiscence walk around Banbury town centre.

The Museum's reminiscence programme reaches deep into the community and is now a partner in delivering the Banbury Heritage Project organised by Age UK Oxfordshire.

We engage with older people living with sight loss and severe mobility issues.

We have been delivering a pilot scheme in rural communities, helping to combat the isolation of older people who no longer travel very far or have access to local heritage/cultural activities.



**Above right:** An accessible theatre visit organised in partnership with The Mill Arts Centre and The Banbury Players.

**Above Left:** Members of the Kidlington Reminiscence Group with pictures of their younger selves.



**Left:** In 2025, the museum took the 'Age Friendly Banbury' pledge. An initiative to ensure openness, friendliness and accessibility for all.

# Taking part and volunteering



## **Volunteers are involved with all the Museum's activities:**

- Welcoming visitors to the Museum.
- Caring for our exhibitions and visitors as gallery assistants.
- Helping to deliver family holiday activities.
- Assisting with the preparation for new exhibitions, special events and Private Views.

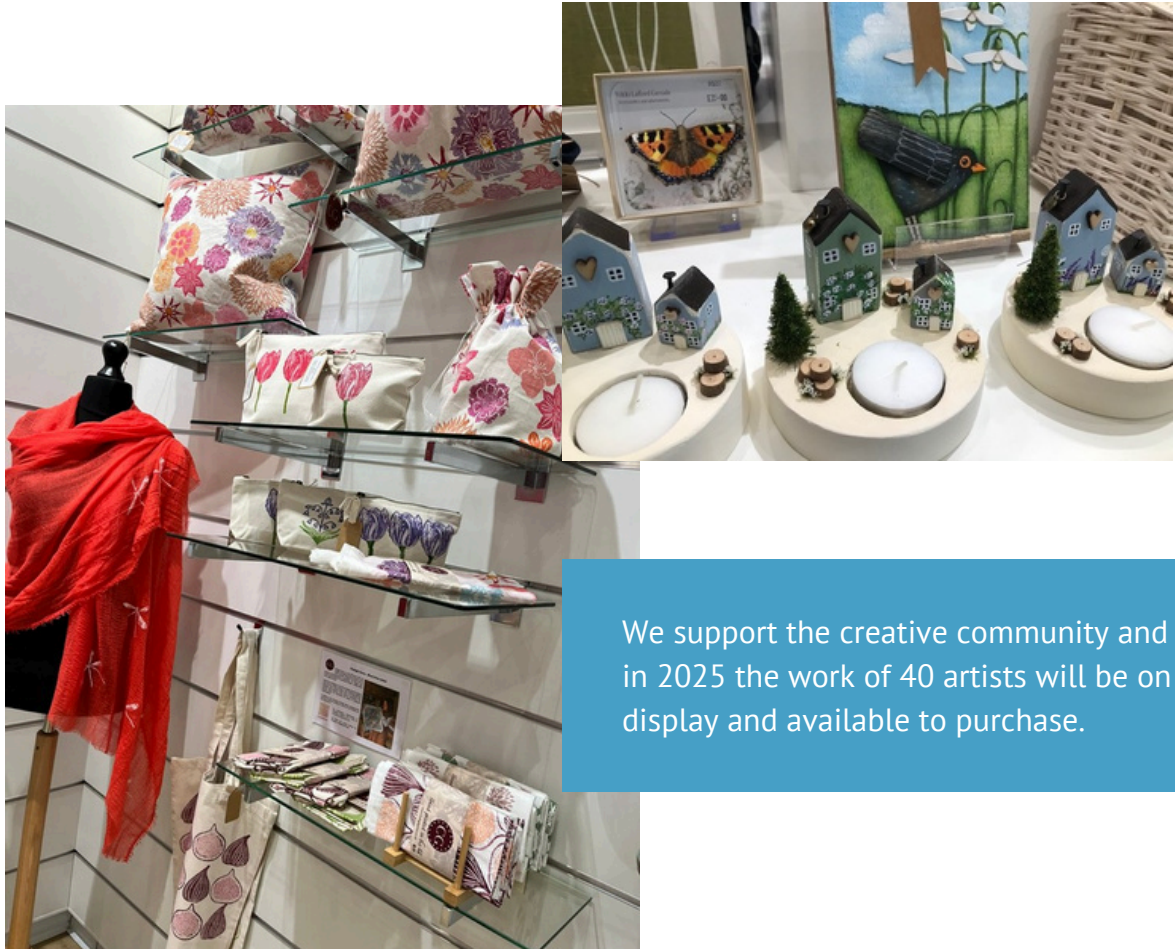


## **Our people volunteer for many reasons:**

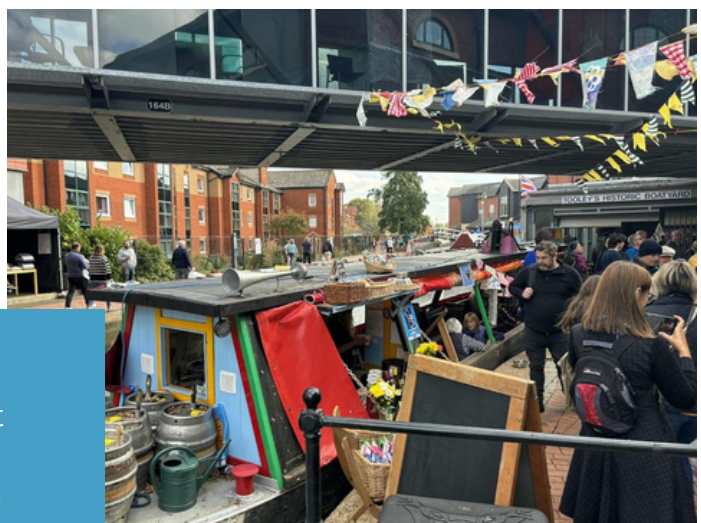
- A commitment to volunteering for the Duke of Edinburgh Award Scheme.
- To gain experience to include in an application to university.
- To take part in a community activity.
- To meet people and give something back.



# Supporting our creative community



We support the creative community and in 2025 the work of 40 artists will be on display and available to purchase.



We support the Banbury Quays Consortium, engaging in projects that celebrate Banbury's rich heritage, promoting visits and encouraging our community to get creative, and take part.

# Support Us

Banbury Museum & Gallery is run by the charity, the Banbury Museum Trust. We are a community endeavour, and we need your help.

The Museum is funded through a grant from Cherwell District Council, our trading activities, donations, our Patron's Circle supporters, Arts Council England, volunteers who help from day to day, and all the people who buy gifts in our shop, or visit our exhibitions.

In order to keep the doors open, we depend upon all these strands of support.

If you would like to join with us on our creative journey, please get in touch.

We welcome volunteers, donations, legacies, supporters for our Patron's Circle programme, and all those who engage with our programmes.



**Above Right:** Private View of the Museum's *Travel Photographer of the Year* exhibition.



**Above Left:** Young Photographer Jamie Smart (aged 9) shows her award winning image to museum trustee Clare Adams.

# Our Patron's Circle

**The Patron's Circle** is formed of donors who commit financially to helping us bring outstanding exhibitions to Banbury. Their generous support is enabling us to develop Banbury Museum & Gallery into a jewel in Banbury's crown, fostering community cohesion, economic growth, learning, wellbeing and prosperity.



**Above:** *'Dinosaurium: Re-Imagined Creatures.*  
Brought to Banbury with help from the Patron's Circle.

**To support our work or join our mailing list  
visit [www.banburymuseum.org](http://www.banburymuseum.org)**

Banbury Museum & Gallery, Spiceball Park Road, Banbury, Oxon, OX16 2PQ  
☎ 01295 236165 ✉ [enquiries@banburymuseum.org](mailto:enquiries@banburymuseum.org)  
Connect with us on Facebook, Instagram or X @banburymuseum

Donate Here



