

PRIMARY SCHOOL PROGRAMME 2017/18



SPONSORED BY


Whitley Stimpson
CHARTERED ACCOUNTANTS AND BUSINESS ADVISORS

WWW.BANBURYMUSEUM.ORG

WELCOME TO THE BANBURY MUSEUM'S SCHOOLS PROGRAMME FOR 2017/18

Quality Badge awarded by



**WITH A STUNNING
POSITION OVERLOOKING
THE OXFORD CANAL
AND A PROGRAMME
PACKED FULL OF NEW
WORKSHOPS, WE LOOK
FORWARD TO MEETING
NEW AND FAMILIAR
SCHOOLS THIS YEAR.**

Suzi Wild – Education Manager

SUPPORT TO SCHOOLS

MUSEUM ADVISORY SERVICE

We can come to your school to develop a workshop or devise resources which will support your topic/ curriculum planning. Please note this is a free service but geographical restrictions apply to this service.

BANBURY MUSEUM – ‘KEEPING CONNECTED’ NETWORK

The ‘Keeping Connected’ network is free to join with exclusive benefits to members including invitations to pilot new museum workshops and advanced information on forthcoming museum workshops and resources. To join the network please contact Suzi Wild – Education Manager.



NOT TO BE MISSED IN 2017/18

OUR SPECIAL EXHIBITIONS THIS YEAR INCLUDE...

BRICK WONDERS

16 SEPTEMBER TO 18 NOVEMBER 2017

CALLING ALL LEGO® OR BUILDERS...

A world of imagination and creativity is awaiting your pupils! Marvel at the shapes and structures that can be snapped together to create the most iconic wonders of the world like the Great Wall of China, the Great Pyramid of Giza and Niagara Falls.

For more information on the special programme and costs contact Suzi Wild – Education Manager.



Kindly Sponsored by



'TAKE ONE' PICTURE WITH US

'Take One Picture' is simply brilliant and encourages imaginative cross-curricular teaching and curious minds.

Inspired by the National Gallery's 'Take One Picture' programme Banbury Museum has its very own programme.

Come and be inspired by our local collection of stunning artwork.

We can design bespoke workshops to support your 'Take One Picture' projects.

To order your 2017/2018 'Take One Picture' resource pack or to book a 'Take One Picture' teacher tour please contact Suzi Wild – Education Manager.

"A MASSIVE THANK YOU. IT HAS BEEN AMAZING, EVERYONE HAS COME BACK SHINING!"

School visit feedback,
'Take One Picture' workshop.



KEY STAGE ONE – WORKSHOPS



TOYS AND CHILDHOOD

This highly interactive and ever popular session encourages pupils to explore toys and games from the past. A brilliant workshop which encourages pupils to explore the old toys and games in our galleries and even to make their very own toy to take home. Very hands on!

This workshop is available for single class and double class bookings.

National Curriculum link:

Changes within living memory.

CANAL EXPERIENCE

Pupils explore the life, times and history of the Oxford Canal using photographs, the museum handling collection and wearing traditional clothes from the waterways. Pupils can also create their very own piece of traditional canal art to take back to school. An optional boat trip can be built in too. A perfect workshop for exploring the topic 'Transport Through The Ages.'

National Curriculum link:

Significant historical events, people and places in their own locality.

“WE ALL HAD A GREAT DAY AND LEARNT A LOT. THANK YOU TO ALL THE WONDERFUL STAFF.”

School visit feedback,
'Canal Experience' workshop.





THE RHYME OF BANBURY CROSS

Using storytelling, games and costume, pupils discover the story and meanings of the world famous rhyme and the Banbury landmarks.

National Curriculum link:

Significant historical events, people and places in their own locality.

This workshop is available for single class and double class bookings.

HOME SWEET HOME

A real hands on experience exploring homes in the past and the present using museum objects and the galleries.

National Curriculum link:

Changes within living memory.

BESPOKE MUSEUM WORKSHOP

We are keen to ensure the museum's resources continue to compliment and support the school curriculum. Bespoke museum workshops can be designed specifically for your school. Workshop hire charges apply.

"EVERYTHING FROM THE WORKSHOP TO WHERE TO PUT OUR BAGS AND COATS WAS VERY WELL ORGANISED AND ENSURED A SMOOTH, STRESS FREE VISIT. THE STAFF WERE REALLY WELCOMING AND HELPFUL."

School visit feedback,
'Toys and Childhood' workshop.

DON'T FORGET

We offer a **'Mix and Match'** museum package – perfect for schools wishing to visit the museum and book both a KS1 and KS2 workshop on the same day.

PLEASE NOTE this package is designed for a maximum of 35 pupils.

Looking for a workshop previously offered and no longer listed? Our workshop archive is extensive and most workshops can still be booked.

For more information contact Suzi Wild – Education Manager.

KEY STAGE TWO – WORKSHOPS



BANBURY THROUGH THE WARS

Through object handling, role play and detective work, your pupils become war correspondents and uncover the impact of war on Banbury and its people. The workshop can focus on the English Civil War, World War One and World War Two.

National Curriculum link:

National Curriculum link A study of an aspect or theme in British History that extends knowledge beyond 1066.

BANBURY EXPLORERS

Pupils become street detectives through a guided walk around Banbury's Market Place. Then it is back to the museum for follow up activities.

National Curriculum link:

Local history study.

“THE RANGE OF WORKSHOPS OFFERED AND THE CHANGING EXHIBITIONS ARE BRILLIANT. KEEP IT UP!”

School visit feedback, 'Jitterbug and Jive' workshop.





JITTERBUG AND JIVE

In our ever popular workshop, pupils discover Banbury life in the 1940's and how to Jitterbug and Jive with their friends. The session uses dance, music, drama, costume and original source materials to bring the key events of World War Two to life.

National Curriculum link:

Events beyond living memory that are significant nationally or globally.

“HOW IT WAS FOR US”

Pupils meet with members of the museum's 'Times Gone By' group and hear first-hand accounts about various aspects of their lives during World War Two.

National Curriculum link:

Events beyond living memory that are significant nationally or globally.



“FANTASTIC VISIT, IT ALLOWED THE CHILDREN TO SEE VIVIDLY LOCAL HISTORY AND HOW IT AFFECTS PEOPLE.”

School visit feedback, 'How It Was For Us' workshop.

KEY STAGE TWO – WORKSHOPS



CANAL EXPERIENCE

Pupils explore the life, times and history of the Oxford Canal through studying photographs, exploring real objects and wearing traditional clothing from the waterways. Pupils can also create their very own piece of traditional canal art to take back to school. An optional boat trip can be built in too.

National Curriculum link:

Significant historical events, people and places in their own locality.

THE LODGERS

Set in a Banbury lodging house, pupils explore real events in the lives of inhabitants in the 1841 lodging house.

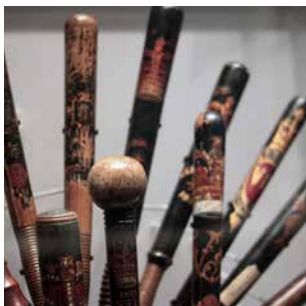
National Curriculum link:

Local history study.



“THANK YOU – WE LOVED THE ART ACTIVITY! STAFF WERE VERY HELPFUL AND KNOWLEDGEABLE.”

School visit feedback, ‘Canal Experience’ workshop.



BESPOKE MUSEUM WORKSHOP

We are keen to ensure the museum's resources continue to compliment and support the school curriculum. Bespoke museum workshops can be designed specifically for your school. Workshop hire charges apply.

DON'T FORGET

We offer a **'Mix and Match'** museum package – perfect for schools wishing to visit the museum and book both a KS1 and KS2 workshop on the same day.

PLEASE NOTE this package is designed for a maximum of 35 pupils.

Looking for a workshop previously offered and no longer listed? Our workshop archive is extensive and most workshops can still be booked.

For more information contact Suzi Wild – Education Manager.



WE COME TO YOU

– OUTREACH WORKSHOPS

A ROMAN LIFE

Who lives in a villa like this? A day in the life of a Roman household. Through object handling, role play and lots of detective work pupils experience Roman life in Oxfordshire.

National Curriculum link:

The Roman Empire and its impact on Britain.

ROMANS REVEALED

A trip to market, Roman style. Pupils use role play, archaeological evidence and hands on activities to recreate a market day in Alchester.

National Curriculum link:

The Roman Empire and its impact on Britain.

MY GRANDPARENT AND ME

Pupils meet with members of our ‘Kidlington Reminiscences’ group and hear first-hand accounts of wonderful grandparent stories. Lots of fun and the workshop can be adapted to meet your topic needs, including ‘Transport Through The Ages.’ This is a 45 minute workshop.

CANAL DAYS

Whilst we cannot bring the Oxford Canal to your school, we can bring a brilliant array of objects, traditional clothes from the waterways, photographs for your pupils to explore the life and times and history of the Oxford Canal. Your pupils even make their very own piece of traditional canal art.

“HOW IT WAS FOR US”

Pupils hear powerful and thought provoking first- hand accounts of family life and growing up during World War Two.

“IT WAS GREAT FOR THE CHILDREN TO HAVE A HANDS ON EXPERIENCES. THEY ENJOYED IT VERY MUCH.”

School visit feedback, ‘A Roman Life’ workshop.

ANGLO-SAXONS ADVENTURES

Invasion alert! Viking raiders on the river Thames in Reading. What does it mean for us here in Banna’s Bury? Pupils spend time in the household of Lord Banna and try their hand at some day to day work in a Saxon household and help Lord Banna prepare to defend it against the Danish invaders. An action packed workshop with hands on activities and role play to explore Saxon life in the Banbury area.

National Curriculum link:

Britain’s settlement by Anglo-Saxons and Scots.



SELF GUIDED SCHOOL VISITS

SELF GUIDED VISITS TO THE MUSEUM ARE FREE.
FREE GALLERY TRAILS ARE AVAILABLE TO SUPPORT YOUR VISIT.
SCHOOLS CAN COMBINE A SELF-GUIDED VISIT WITH A...

GALLERY DISCOVERY BOX

A discovery box contains a range of game-based activities and topics for KS1 and KS2. They are a cross-curricular resource and draw on the maths, english, art, science and history programmes of study. A gallery discovery box is ideal for small group work (up to 5 pupils). A hire charge applies.

'WELCOME AND WOW' TOUR

A 'Welcome and Wow tour' is a 15 minute introductory museum tour which showcases key collections on display either in the permanent galleries or through our temporary exhibition programme.

The tour is designed for a single class up to 35 pupils. A tour charge applies.

DEDICATED BREAK, LUNCHTIME OR STUDY ROOM

Space available – hire charges apply.

OUR SPECIAL EXHIBITIONS

Throughout the year we offer a brilliant programme of truly special exhibitions. Entry into our special exhibitions may carry a separate charge.



"WE REALLY APPRECIATED THE FLEXIBILITY WITH THE BOOKING AND WITH THE TIMINGS. THANK YOU".

School visit feedback,
'Welcome and Wow' tour.

BOOKING INFORMATION

BOOKING IS ESSENTIAL FOR ALL THE WORKSHOPS INCLUDING SELF – GUIDED VISITS.

Please telephone the Learning Support Office on **01295 753785** or email **enquiries@banburymuseum.org**

To discuss your visit in greater detail please contact: Suzi Wild – Education Manager on 01295 753784.

CONFIRMATION OF YOUR BOOKING

Following the confirmation of your booking we will send a school visit pack which will include a workshop plan and additional information which will prove useful for your visit and for sharing with accompanying adults.

CANCELLATION POLICY

Unless an alternative date can be found, visits cancelled within 28 days of the school visit will incur a 50% cancellation fee. Visits cancelled within 7 days of the school visit will incur a 100% cancellation fee.

PARKING FACILITIES

A coach/car drop-off point is situated at the back of the museum in Spiceball Park Road.

LUNCH FACILITIES

The education studio is available as a picnic area in poor weather or as desired.

ADULT/PUPIL SUPERVISION

We require a ratio of 1 adult:5 pupils for KS1 and KS2 visits.

Additional adult supervision required for the ‘Canal Experience and Boat Trip’ workshop.

For outreach workshops – class teacher to remain in the workshop at all times.

BANBURY MUSEUM TRUST DBS POSITION STATEMENT

The Museum recognises that a Disclosure and Barring Service (DBS) check, with barred list check, is required by law on any member of staff or volunteer who has regular unsupervised contact with children. Regular in this context is defined as unsupervised contact on one or more occasions a week. As our museum staff do not fit this definition, they are not required to be checked. It is the responsibility of the visiting school to ensure schools leaders hold the appropriate DBS clearance.

RISK ASSESSMENT

A workshop risk assessment will also be sent prior to your visit.

“VERY HELPFUL STAFF GUIDING ME THROUGH THE PROCESS OF BOOKING AND THROUGH A PRE-VISIT.”

Teacher feedback.

PROGRAMME COSTS

- For self – guided school visits – a visit to Banbury Museum is free of charge.
- Hire of a dedicated break or lunchtime space (for one class up to 35 pupils) – £15 per hour.
- Hire of a dedicated study room (suitable for small student group) – £15 per hour.
- A ‘Welcome and Wow’ introductory tour – £15 per talk.
- Hire of a Gallery Discovery Box – £5 per box.
- ‘How it was for us’ and ‘My Grandparent and Me’ intergenerational workshops – £45 per session.
- Workshops at the museum – £3.50 per pupil for all single class visits (up to 35 pupils) with a minimum group fee of £70.
- £4 per pupil for all double class visits (up to 70 pupils) with a minimum group fee of £100.
- Boat trips cost an additional £3 per pupil.
- **PLEASE NOTE** for schools booking a museum workshop, there is no charge for hiring the ‘Gallery Discovery Boxes’ and dedicated break/lunchtime space. It is included within the workshop charges.



- Outreach workshops: £80 per session for the ‘Canal Days’ and ‘Roman Life’ workshops. £130 per session for our ‘Anglo-Saxon Adventures’ and ‘Romans Revealed’ workshops.
- Additional outreach sessions on the same day and the same workshop can be arranged please enquire at the point of booking.
- Payment – on the day by cheque or invoice (by school request).
- **PLEASE NOTE** there is no charge for teachers and accompanying adults.

WORKSHOP INFORMATION

WORKSHOPS AT THE MUSEUM

- Usually start at 10am and last for 2 hours and 30 minutes which includes gallery time. For schools travelling some distance to Banbury please contact the museum – we aim to be as flexible as we can with workshop start/finish times.
- Are designed for single class groups of up to 35 pupils.
- Due to very popular demand larger groups can be accommodated for the 'Toys and Childhood' and 'The Rhyme of Banbury Cross' workshops.
- The required adult:pupil ratio is 1:5.
- Additional adult supervision required for the 'Canal Experience and boat trip' workshop.



WORKSHOPS AT YOUR SCHOOL (OUTREACH)

- Last for 1 hour 30 minutes except for 'Anglo-Saxon Adventures' and 'Romans Revealed' which last 2 hours 30 minutes.
- Are designed for single class groups of up to 35 pupils. For larger groups multiple sessions can be booked.



Whitley Stimpson

CHARTERED ACCOUNTANTS AND BUSINESS ADVISORS

WHITLEY STIMPSON ARE VERY PROUD TO CONTINUE THEIR CORPORATE SPONSORSHIP OF BANBURY MUSEUM'S SCHOOLS EDUCATION PROGRAMME.

Whitley Stimpson are one of the leading independent accounting and business advisers in Oxfordshire and Buckinghamshire, with offices in Banbury, Bicester, High Wycombe and Witney. We are ranked in the top 100 accounting firms nationally in the UK, and have been finalists at the British Accountancy Awards for the last 3 years and were finalists at the Cherwell Business Awards in 2017.

The education sector is constantly changing. Having the commitment and support of a specialist and knowledgeable team is therefore vital. Our dedicated education team have a genuine heart and passion for the education sector. We provide advice and support on all financial and governance issues in addition to the annual audit and compliance reporting to the Department for Education and Education Funding Agency. We also advise on strategic ventures and mergers between schools and academies, acting as sounding board for governors and senior management teams.

Our dedicated team work with a diverse range of educational organisations. Standalone academies, local and regional multi-academy trusts, SEN schools, free schools and independent schools.

Our approach straightforward. We listen to you. We support you in the long term. We deliver our services on time. We look for innovative solutions. We communicate politely and in plain English. We are flexible.

Our specialist knowledge is second to none.

FOR ACCESS TO USEFUL EDUCATION SECTOR RESOURCES

visit www.whitleystimpson.co.uk or
email academies@whitleystimpson.co.uk
to sign-up for our regular updates and e-briefs.

VISITOR INFORMATION

ADMISSION

General Admission Free.

Special exhibitions may carry a separate charge.

OPENING TIMES

Galleries: Monday – Saturday 10:00 – 5:00
Also open Bank Holidays 10:30 – 4:30

KEEP IN TOUCH

Visit the website or ask in the museum to join our mailing list to receive regular news and updates.

HOW TO FIND US

Our main entrance is in the Castle Quay Shopping Centre and is fully accessible to all. Coming by car? Our postcode is OX16 2PQ. Using public transport? We are a short walk from the bus and train station – follow signs to Castle Quay Shopping Centre.

PARKING

The nearest car park to us is Spiceball North or Spiceball Park Road.

CONTACT US

Banbury Museum
Spiceball Park Road
Banbury, OX16 2PQ

01295 753752

enquiries@banburymuseum.org

www.banburymuseum.org

