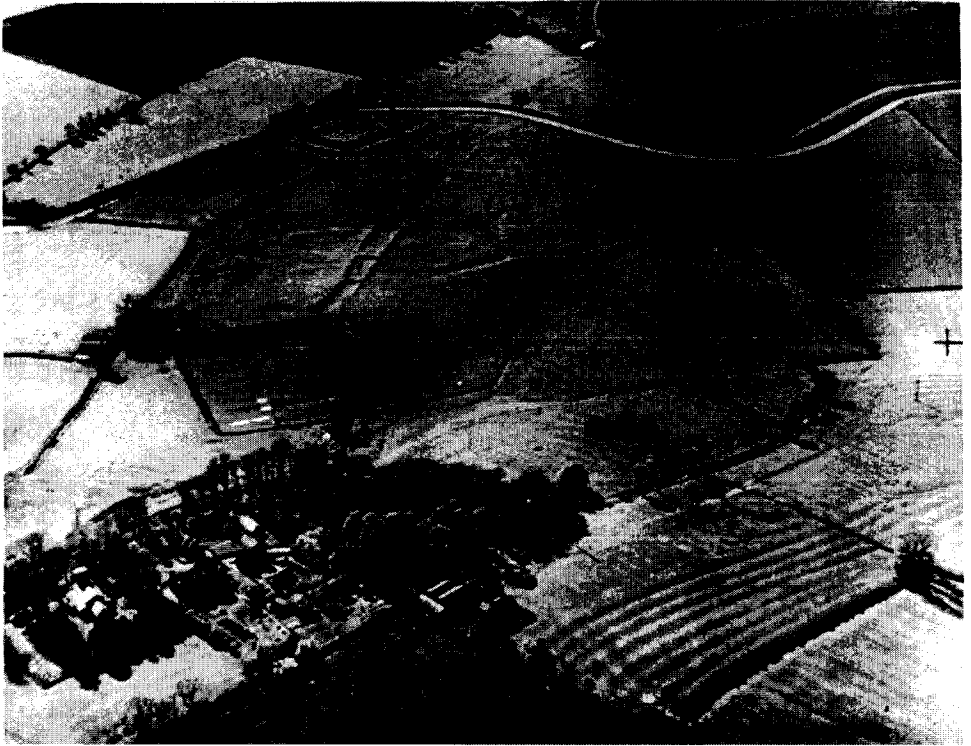


Plate 6



*Dr. J. K. St. Joseph*

*Crown Copyright Reserved*

Aerial photograph looking north-west showing the old church of Wormleighton and a cluster of cottages on the hill-top (bottom left); earthworks of the deserted medieval village and rectangular moated homestead near the canal; outlines of a secondary cluster of deserted dwellings on the hill flank below the church; a great square fish pond with four small fish-breeding tanks (now drained); old water channels leading from the large fish pond into the valley below; remains of the great double hedgerows set up soon after 1499; ridge-and-furrow patterns of former arable land-use in the fields around the past and present settlements.