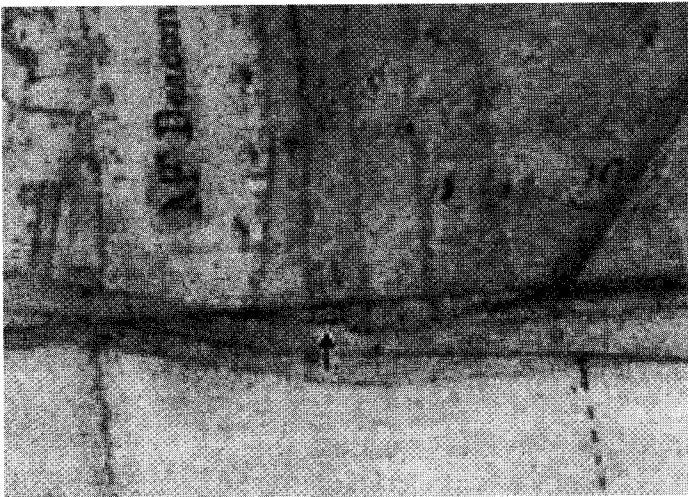




*Fig 2: Former corner-shop and residential premises, now renamed The Old Manor House; the New Manor House, built by Charles Harris in 1836, is visible behind the hedge to the right.*

The map shows, although not as clearly as one might wish, that by 1767 there was already the beginnings of a group of buildings spreading along Heyford Road from the Paines Hill corner towards The Dickredge (Fig 3).



*Fig 3: Extract from 1767 Enclosure Map, showing at least one lost building (arrowed) on the corner of Paines Hill and Heyford Road.*